

To inform and inspire

In 2017, CARE was involved in various public activities all over Germany. On the sixth anniversary of the Syrian crisis CARE, along with 23 board members of Germany's largest aid organizations, organized a publicity campaign in front of the German Parliament with a clear message: As long as the international community does not provide political preconditions for peace, the helpers' hands are tied. In May, CARE celebrated the "Week of the CARE Package": From contemporary witness appearances in schools to an airlift commemoration event in Berlin - 25 activities served as a reminder of the once biggest relief operation in history. In addition, over 400 runners showed their support for the CARE campaign "10.000 Steps" against hunger in East Africa. In the months leading up to the German federal election CARE called for a constructive dialogue on flight and migration with its campaign "CARE. Don't hate". In November, CARE awarded the Millennium Award to Dr. Christiana Figueres, the former Secretary-General of the UN Framework Convention on Climate Change (UNFCCC), succeeding former German president Prof. Dr. Horst Köhler, who received the award in 2015.

Thank you!

Our work for people in need would not be possible without you, our donors, institutional partners, foundations, associations and corporate partners.

We would like to take this opportunity to thank each and every one of you!

We would also like to express our special thanks to all our employees, our voluntary bodies, the CARE action groups, donor councils and all contemporary witnesses and schools, who are so committed to shape our work.

Thank you for being at our side!

CARE at a glance

CARE is one of the world's largest private organizations for emergency aid and poverty reduction. CARE was founded in the USA in 1945. Back then over 100 million CARE packages reached the suffering post-war Europe. Today, CARE is a global movement consisting of 14 national CARE organizations. CARE Germany was founded in 1980 and became CARE Deutschland-Luxemburg e.V. in 2008. CARE is currently active in over 90 countries and provides emergency aid, development and human rights work. The work is directed at the most vulnerable and especially supports girls and women. CARE provides survival aid in war and disaster areas and supports reconstruction. In structurally poor countries, CARE is working with village communities to combat the causes of their poverty. CARE is politically and denominationally independent and works in accordance with recognized international quality standards. CARE also holds consultative status with the United Nations.

CARE - For a world without suffering and poverty in which all people live in dignity, security, peace and freedom.



Our complete annual report 2017 can be downloaded at www.care.de. We will be pleased to send you a printed version.

To do so, please contact our donation service:
Phone: +49 (0)228 97563-26,
spenden@care.de.



Your donation counts

CARE uses every donation as effectively and efficiently as possible: of every euro donated to CARE 87 cents are channelled directly into our projects. 8 cents are used for public relations and advertising, 1 cent funds our educational work and less than 4 cents secure the quality and sound administration of our work in Germany and abroad.

Please transfer your donation to the following account:
IBAN DE93 3705 0198 0000 0440 40
BIC COLSDE33
For online donations: www.care.de/spenden

This review was printed on FSC paper that comes from responsibly managed forests. Photos: p. 1: CARE/Estey; p. 3: CARE/Ansi. CARE/Caton, CARE/Harth, CARE/Knoll.

Tested and recommended: CARE has received the donation certificate from the Deutscher Spendenrat (German Donation Council) and is committed to the standards of the Transparency for Civil Society Initiative and the VENRO Code of Conduct. CARE repeatedly receives awards for its transparency and quality of its work, nationally and internationally. Spiegel online and the Phineo analysis house rank CARE among the three most transparent donor organizations in Germany.

CARE Deutschland-Luxemburg e.V.
Dreizehn Morgenweg 6, 53175 Bonn, Germany
Phone: +49 (0)228-97563-26, Email: spenden@care.de, www.care.de
New address from December 2018: Siemensstraße 17, 53121 Bonn, Germany



TRANSPARENCY AND IMPACT
EXTRACTS FROM THE CARE ANNUAL REPORT 2017

CARE's work in 2017 and its achievements

2017 was the 12th year in a row, in which wars and conflicts have increased worldwide. The number of people who had to flee from violence rose to 68.5 million, a new record level. Thanks to your help CARE was able to act.

Together, we succeeded in 2017 to secure the survival of 63 million people and to help them start a new life. In and around Syria, for example, CARE was able to support three million people, in war-torn Yemen 1.7 million people in need received assistance. In Somalia and Ethiopia CARE provided help for over two million people suffering from hunger. In August, over 700.000 people fled from Myanmar to Bangladesh where one of the largest refugee

camp in the world formed within a very short period, posing great challenges with regard to the initial care for the often severely traumatized people. CARE provided help around the clock and took over the management of the Potibonia Camp in Cox's Bazar. In addition to emergency aid, CARE supported 49 million people worldwide on their way out of extreme poverty, improved access to education and health, increased harvests and incomes and strengthened human rights. Overall, in 2017 CARE helped to save lives and to overcome poverty with 950 aid programs in 93 countries.

Thank you very much for making this help possible!

CARE GERMANY

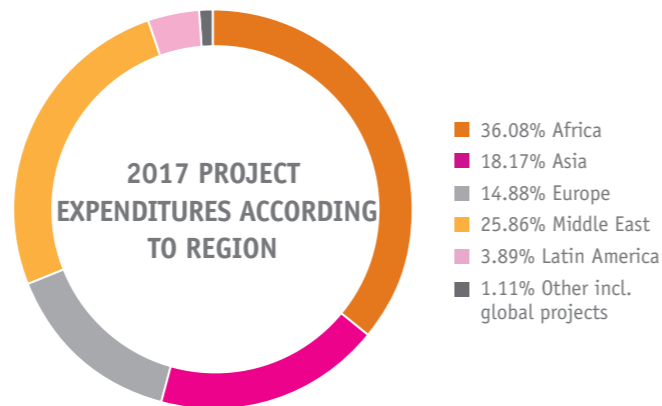
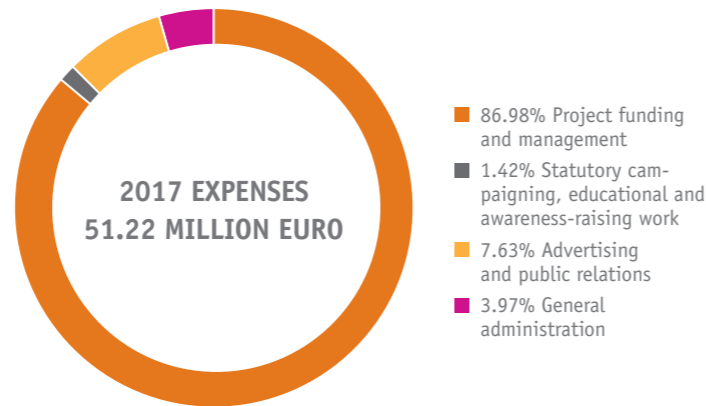
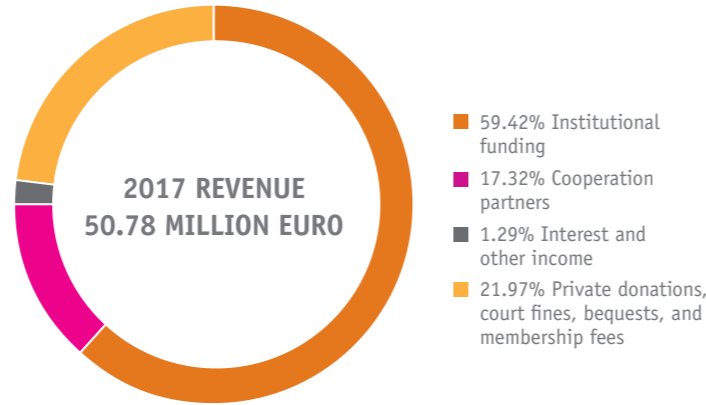
In 2017 CARE Germany supported CARE's work worldwide with 157 self-help programs in 35 countries, reaching over five million people in need.

CARE Germany implemented most of its aid programs in Africa, particularly in Niger, the Lake Chad region and the Horn of Africa. Major operations in and around Syria, Iraq and Yemen made the Middle East the second key region in 2017. Making up 70 percent of all aid programs, the thematic focus was on the support of displaced persons in their countries of origin, along their escape routes and in the countries where they seek protection. In addition, our integration project KIWI for children and adolescents with a migration or refugee background, which was launched in Germany in 2015, was successfully expanded nationwide.

In 2017 CARE Germany used 30 percent of the provided aid to create sustainable and better living conditions for the most vulnerable. Examples are farmer field schools that improve the cultivation methods and nutrition in Ecuador, Madagascar, Malawi, Niger, Peru, Zambia or West Bank/Gaza; medical mother-child-programs in Kenya, Cambodia or Laos; educational programs in Egypt, Kenya or Nepal or the establishment of women savings and income groups, which work together on building a better future in Somalia and many other countries.

FINANCIAL FIGURES 2017

In 2017 CARE Germany, including its country offices in Northern Iraq, in Greece and the Balkans, had total revenues of 50.78 million Euro which constituted a slight decline of 2.3 percent compared to the record year 2016. Expenditures amounted to 51.22 million Euro. 87 percent went directly into the local aid programs and thus guaranteed the continuation of all aid measures at a very high level. This was also possible thanks to our public partners, in particular the Federal Ministry for Economic Cooperation and Development, the Ministry of Foreign Affairs and the European Commission. Eight percent of the expenditures were used for communication and fundraising while four percent went into quality management, administration and donor management and one percent was used for statutory educational work.



2017 CARE Country list - countries with CARE Deutschland-Luxemburg e.V. programs

- | | | | |
|----------------------------------|-------------|------------------|--------------------|
| Afghanistan | Egypt** | Madagascar | Somalia |
| Albania*** | Ethiopia | Malawi | Sri Lanka** |
| Armenia* | Fiji* | Mali | South Sudan |
| Azerbaijan* | Georgia | Mexico* | Sudan |
| Bangladesh | Germany** | Montenegro* | Syria* |
| Benin | Ghana | Morocco** | Tanzania |
| Bolivia | Greece | Mozambique | Thailand** |
| Bosnia and Herzegovina | Guatemala | Myanmar | Togo* |
| Burkina Faso | Haiti | Nepal | Turkey |
| Burundi | Honduras | Nicaragua | Uganda |
| Cambodia | India** | Niger | Vanuatu* |
| Cameroon | Indonesia** | Nigeria* | Vietnam |
| Chad | Iraq | Pakistan | West Bank and Gaza |
| Costa Rica* | Ivory Coast | Panama* | Yemen |
| Croatia | Jordan | Papua New Guinea | Zambia |
| Cuba | Kenya | Peru** | Zimbabwe |
| Democratic Republic of the Congo | Kosovo*** | Philippines | |
| Dominican Republic* | Laos | Romania* | |
| East-Timor | Lebanon | Rwanda | |
| Ecuador | Liberia* | Serbia | |
| | Macedonia | Sierra Leone | |

* No CARE office. Project implementation through local partners ** Member of CARE International and project country *** CARE DL is active with transnational projects

- CARE-Members**
- Australia
 - Austria
 - Canada
 - Denmark
 - Germany-Luxembourg
 - France
 - India
 - Japan
 - Netherlands
 - Norway
 - Peru
 - Thailand
 - United Kingdom
 - USA
- CARE International/Secretariat**
- Geneva, Switzerland
 - Brussels, Belgium
 - New York, USA
- Branch Offices**
- Belgium
 - Czech Republic
 - United Arab Emirates
- Chairmanship CARE International**
- Chair: Louise Fréchette
 - Secretary General: Caroline Kende-Robb
- (as of 8/2018)
- In the admission process**
- Egypt
 - Indonesia
 - Morocco
 - Sri Lanka

1 Responding to urgent needs

Project example Yemen – Help between the front lines: For three years, the people in Yemen have been suffering from the on-going war. 22 million people depend on humanitarian aid. People suffer from hunger and only few have access to clean water. As a consequence the largest cholera epidemic ever measured broke out in April with up to 6.000 new infections every day. For CARE it was a race against time to help the people with drinking water, cholera education, hygiene packages and support for medical facilities. CARE repaired wells, installed water tanks and helped with food, work and cash. CARE Germany managed to reach almost 80.000 people with its programs, CARE International supported more than 1.7 million people in need.

2 Ensuring survival

Project example Somalia - Fighting against hunger: Somalia has experienced the worst drought since 1974. 300.000 infants were acutely malnourished, in 45.000 cases the situation was life-threatening. CARE doctors and nutrition teams treated 20.320 severely malnourished or ill infants in remote regions with mobile clinics. 2.500 families received food coupons, another 2.500 income from community service. CARE repaired 147 wells and founded 131 small savings and income groups - help for over 253.000 people.

3 Fighting poverty

Project example Peru – a holistic approach: To combat poverty and malnutrition, which is widespread in the Andean regions of Peru, CARE and its local partner Acción Andina conducted a three-year self-help project in 38 indigenous communities in Ayacucho and Apurímac. New irrigation and cultivation methods, home gardens with vitamin-rich and nutritious vegetables, start-up help for small animal breeding or generating new income could deeply improve the situation of families and reduce the malnutrition rate of children by 20 percent. Communities learned to organize themselves and to enforce their rights when dealing with authorities.

4 Proving impact

Impact analysis: In Zambia, CARE developed the SCALE project in collaboration with female welfare recipients. An evaluation of the results and impact after the completion of the project concluded: Thanks to the CARE small savings groups and trainings 80 percent of the 10.350 participating women were able to increase their income by 800 Kwacha, approximately 70 Euro, and became independent from external help. The project also had a long-term effect on the social interaction within the communities. Women were given more respect and room to manoeuvre. Further impact analyses can be found here: <https://impact.care-international.org/>

